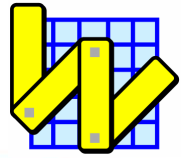
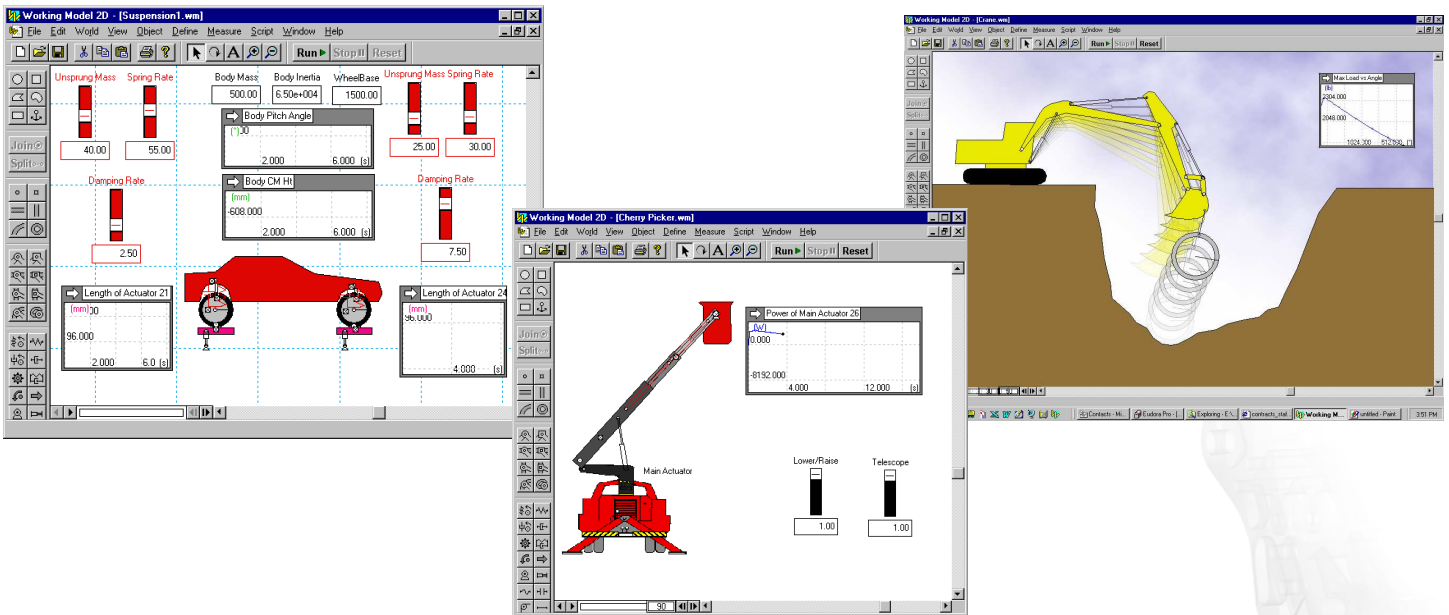


# Working Model 2D



THE WORLD'S MOST POPULAR 2D COMPUTER AIDED ENGINEERING TOOL



## AFFORDABLE, ACCESSIBLE, PROFESSIONAL TECHNOLOGY

Working Model 2D provides a diverse set of CAD and mathematical tools that enable students, educators and engineers to rapidly build complex models simulating the physical world. Never before has it been as easy to setup an experiment and explore "what-if" scenarios.

Working Model 2D makes it possible to visualize scientific and engineering concepts taught in the classroom, making course material more relevant and enjoyable. Further enhancing the interactive student teacher experience, Working Model 2D provides tools to design, test, refine, and verify mechanical, biomechanical and structural assemblies.

## SOPHISTICATED CAPABILITIES; EASY AND FUN TO LEARN AND USE

- Measure velocity, acceleration, force, momentum, energy, etc. in metric or English units
- Create ropes, springs, dampers, pulleys, slot joints, linear actuators, and rotational motors
- Use advanced capabilities like DXF import, Flexible Beams, and DC Motors to model sophisticated products and systems
- Use sliders and the built-in basic scripting language to create interactive simulations
- Export results to Excel and other applications for further processing and analysis

Learn simulation in the classroom, apply it in the workplace

Try it Free! - [www.workingmodel.com](http://www.workingmodel.com)

